

# spotlight

on Children & the Arts

Summer Edition

## 'I BELIEVE IN FAIRIES'

by Jonathan Hyde,  
Ambassador of Children & the Arts



©Cathy Waite

1200 children and adults, a marquee shaped like a palace in Kensington Gardens, Their Royal Highnesses The Prince of Wales and The Duchess of Cornwall and a cast of 21, ranging from a crocodile made of coat hangers to a fairy wearing a tutu replete with fairy lights. This was The Royal Gala Premiere of Peter Pan in aid of The Prince's Foundation for Children & the Arts on 17 June 2009 and as I was playing both Captain Hook and Mr Darling, I was lucky enough to be a part of this magical evening.

Celebrities arrived on the red carpet including Children & the Arts Ambassadors Sharon Osbourne, Richard E Grant and Adrian Lester, guests from America such as Joan Rivers and Brett Ratner rolled up in their limousines, and most importantly, there were over 300 children who were able to attend for free.

The evening started with a live jazz performance from Joe Stilgoe and then, at 7.55pm on the dot, Their Royal Highnesses entered the theatre to a Royal fanfare. Before I knew it, I was up on stage as Mr. Darling, desperately trying to tie my bowtie!

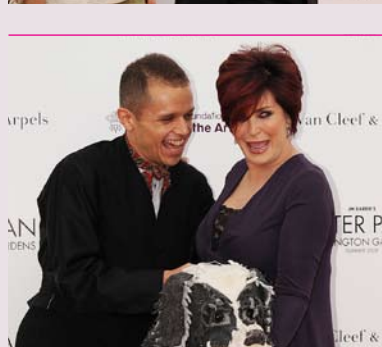
For me, the highlight of the evening was having 1200 people – children and adults – whispering 'I believe in fairies' to help save Tinkerbell from Captain Hook. This brought to life the joy of the theatre – seeing a full house, from all different ages and walks of life, interacting with each other and the cast, many of them truly believing in fairies.

Having the opportunity to experience exciting and high quality performances like this is surely something every parent would want for their child. It is also a wonderful alternative to the encroaching power of the cathode nightmare. Home entertainment is all very well but the alternatives are dazzling. Without a curriculum that implements this though, many children are unable to visit a theatre or a gallery without the help of organisations like Children & the Arts.

As a new Ambassador of the charity, I proudly endorse and believe that the work they are doing will change the lives of every child they reach.



Adrian & Lolita Lester



Sharon Osbourne & Nana the Dog

## POETRYQUEST ANNOUNCEMENT

We are excited to announce the launch of PoetryQuest, a new national project linking Nottingham Castle Museum & Art Gallery, Cyfarthfa Castle Museum & Art Gallery, Yorkshire Sculpture Park and Birmingham Museum & Art Gallery with 16 primary schools and introducing 1,000 children to epic poetry.

Over the next academic year the pupils will visit their partner arts venue and work with professional poets, visual artists and educators both there and back in the classroom. They will explore exceptional artwork at the venue and create their own epic poetry and artwork in response. Their teachers will also attend an inspiring poetry and visual arts training day at the start of the year. Finally, representatives from each of the schools will celebrate with a festival style finale at the end of the academic year bringing work together from all four areas involved.

A massive thank you to The Foyle Foundation and Vanclief and Arpels Foundation for making this project possible by sponsoring PoetryQuest!

**PoetryQuest is an excellent idea – one that allows poetry to play a central role in the life of children, and encourages them to discover, explore and enjoy the manifold and various delights of language.**

Sir Andrew Motion



## RAISE MONEY FOR CHILDREN & THE ARTS

### Running Team

On the 11th October 2009 20 runners will be taking part in The Royal Parks Foundation Half Marathon raising much needed funds for Children & the Arts. If you would like to support our runners you can sponsor them [here](#).

### WIN a Fiat 500!

Visit [Everyclick](#) and take part in the online raffle. Tickets cost only £2 (£1.90 of which comes directly to Children & the Arts). The draw closes on the 21st August. Good luck!

## MusicQuest Competition

Children & the Arts is delighted to announce that Pentland Primary School in Middlesbrough is the National winner of the 2008/09 MusicQuest competition.

Pentland Primary School will receive £10,000 worth of instruments, courtesy of Yamaha Music UK. Their winning piece will also be orchestrated and performed live at the Classic FM Live Concert on the 24 September 2009. The winning class will attend the concert.

The five regional winners are: Ochiltree Primary School in East Ayrshire, St Gerrards Primary School in Middlesbrough, Greenways Primary School in Stoke on Trent, Newhall Park Primary School in Bradford and Stradbroke Primary School in Lowestoft. Each receives £1,000 worth of Yamaha instruments.

Children & the Arts would like to congratulate all the winners and thank everyone who took part.



©Catriona Bryden

## AMBASSADORS

Children & the Arts welcome the support of four new ambassadors, Zoë Wanamaker, Don Warrington, Adrian Lester & Jonathan Hyde.

**What is the point of having this huge cultural heritage if the only people who enjoy it are those who are already convinced of its importance? Children & the Arts is opening the world of the Arts up to children, inspiring in them a passion that will make them the theatre goers and art lovers of the future. I want to ensure this happens!**  
Zoë Wanamaker



©Mike Daines

## START – New Partners

Following the selection of 13 new arts partners, Children & the Arts is set to work with 40 arts organisations and over 18,500 children through Start in 2009/10.

The new partners are: Battersea Arts Centre; Bodelyyddan Castle Trust; DanceEast; National Museum Cardiff; No Limits Theatre; Northern Stage; Norwich Castle Museum; Orchestra of the Age of Enlightenment; Royal Cornwall Museum; Taigh Chearsabhagh Museum and Arts Centre; The Makers Guild in Wales; Theatre Royal Margate; and Warwick Arts Centre.

View a map of all current Start partners [here](#)

## START SNAPSHOT: Unity Theatre & Ranworth Square Primary School, Liverpool

Ranworth Square Primary School is situated in the middle of Norris Green Estate in Liverpool, an area of exceptional social and economic deprivation. One of the results of these levels of deprivation is a serious gang problem and the consequent challenges and risks that this presents. More than half of the students are eligible for free school meals and there is an exceptionally high percentage of children with learning difficulties and/or disabilities.

**Theatre is fun, because you learn things as well**  
Pupil

Unity Theatre is taking part in its third year of Start and has developed a strong partnership with Ranworth Square over the last two years. One teacher commented that without Start her pupils would have had no cultural engagement whatsoever during Liverpool's year as the European Capital of Culture.

This year the pupils taking part in Start will visit Unity twice, each time for a performance and a workshop or other activity. They will also have at least two practical workshops in school which will enthuse and prepare them for the theatre visits.

One teacher commented on how engaged a student with autism was by the performances and across the board the teachers noticed how taking part in Start benefited the students beyond the experiences themselves. Ranworth Square now has a weekly drama group which puts on performances for pupils and parents and launched as a direct result of Start. Drama has also become a significant aspect of the school's curriculum where as before it was latched on as a small part of speaking and listening.



©Unity Theatre

**Visiting the theatre is not part of our children's normal experience. Very few of them have ever been except through school. [Working with Unity] has shown them a) what fun going to the theatre can be, b) how scripts are transformed into something magical and c) acceptable behaviour when watching a play. This has all had a noticeable effect in the classroom.**

Teacher, Year 5